

Britain's Great Little Railways

Newsletter 88



May 2023

AGM & SPRING GENERAL MEETING

The 2023 BGLR AGM and Spring General Meeting was held at the Thompson Park Railway and hosted by Mike Bailey, Secretary of the Burnley and Pendle Miniature Railway on March 22nd. The Minutes of the Meetings were kindly taken by Roger Brown our Treasurer as I was unable to attend. The minutes have been circulated to all members for their consideration.

Ian Whitfield took some photos on the day and these are featured below.



© photos by ianpw



The attendance was on the low side but I understand that a good day was had by those who attended.

BGLR News

Following the completion of the subscription round BGLR membership now stands at 53 with 45 railways on the brochure which was distributed in time for Easter running.

Joiners

The Lizard Light Railway & Tramway – permanent track being built at Trerise Farm, Ruan Minor, Cornwall
Museum of Power aka Langford & Beeleigh MR – Based at Langford, Near Maldon Essex
Echills Wood Railway – Based in Kingsbury Water Park, Sutton Coldfield

Leavers

Great Cockcrow Railway
Mortcombe Railway Society
Strawberry Line Miniature Railway
There & Back Railway
Weston Park Railway

NEWS FROM OUR MEMBERS

Barnards Miniature Railway

MAINTENANCE:

The Barnards Miniature Railway has recently listed for sale a fleet of Mardyke MK3 coaches, collected and repainted from the Barleylands Miniature Railway and Pentney Park Railway. Bogies and Perspex screens included within the sale.

<https://barnardsminiaturerailway.eu/for-sale/>

The fleet of steam locomotives have been bought out of winter hibernation and several locomotives have already been steamed during our Easter Express 2023, including a special triple header at the end of the Saturday.



Barnards Miniature Railway has since started regular running with a mix of steam and diesel locomotives, please check our official Facebook and website for more information.



We are proud to have a fleet of narrow gauge style wagons, which have been restored one-by-one and now run as a demonstration goods train on certain days.

6 new carriages are on order from CMD Engineering, which will join our existing fleet of 15 in passenger traffic.

Work is underway on organising our main gala of the year, the Summer Gala. Please check our Facebook and website for more details closer to the event. *Nathan Bentley*

Stapleford Miniature Railway

As we are approaching the first of our two annual opening at the Stapleford Miniature railway, we are looking forward to welcoming many visitors but alongside that we would like to extend an invitation to fellow railways and their volunteers to visit and enjoy the surroundings in a private visit. We are also always looking for new volunteers of all ages and abilities to help maintain and help during our event weekends. Benefits include private running days and social events email info@fsmr.co.uk for more information.

Mike Allsop



Stapleford SMR
Miniature Railway

Miniature Traction Engines
Classic Car / Motorcycles
Vintage Tractors
Stationary Engines
Classic/Retro Caravans
Trade Stalls
Fun Fair
Licensed Bar
and much much fun for all the family

Camping Available £30 the weekend

OPEN 10am -5pm
Adults £5
Under 16's £3
Under 5's FREE

LOROS
Hospital Care for Leicester, Leicestershire & Rutland

June 10th/11th 2023
Next to Stapleford Park, Melton Mowbray LE14 2SF

WWW.FSMR.CO.UK / EVENTS@FSMR.CO.UK

Brookside Miniature Railway

On Sunday the 26th of March 2023 we held a charity event for The Christie Hospital in Manchester.

The railway staff all volunteered to work for free, Keelings Amusements donated all their takings for the day to the charity and there was a raffle with the prizes given free by local businesses.

All in all we raised £3,810.70 for the Cancer treatment hospital and they have told us that they are over the moon with the amount we raised. David Buxton



Thompson Park Miniature Railway

The members of the Burnley and Pendle Miniature Railway Society hosted the AGM of Britain's great little railways at Thompson Park in March and we think all who attended had a pleasant experience.

We opened to the public on Saturday 1st April and with the Easter holidays looming we were expecting to open 10 out of the following 15 days. The railway, during Easter weekend, was extremely busy taking record number of rides.

We have several special events arranged during the summer including our very popular teddy bears picnic and super hero Sunday. We open weather permitting every weekend until the end of September. Also bank holiday's and Wednesday during local school holiday's.

Our last running weekend in September is always a charity weekend and over the last few years we have made donations to Pendleside Hospice, the Air Ambulance service and Visual impaired children's support.

Last year we also purchased another defibrillator and had installed in the park. The photo were taken at the AGM. *Mike Bailey, Photo by ianpw*



GREAT LAXEY MINE RAILWAY - RAAD YIARN MEAIN MOOAR LAKSEY

The volunteers continued with our track maintenance work, we experimented with Nylok nuts on the fishplate bolts, but have gone back to anti-vibration washers and ordinary nuts for the moment. We will see

how things go. Engine BEE is still in the re-build stage, but is nearly completed, the engine has been tested using compressed air and we hope that it will return mid-summer.



We started our season a week earlier than usual and organized an 'Easter Egg Hunt' for the children. This proved a great success with us having our best ever Easter start, even having to run two trains on the operating day: one steam, one battery. Following this we are looking at running more events during the year, leading up to our main Hop tu Naa event in October.

One day we had a gentleman down who was keen to arrange a photograph, he is attempting to ride on every steam line in the British Isles. He thinks that there are about 135 and that we were number 117 on his list (better late than never).

Mid April we had an organized photo shoot party arrive on the Sunday, and we then spent over two hours having the Engine ANT and wagons photographed in all positions and angles. The main problem was getting smoke to come out of the chimney, and we had to resort to putting wet gorse and twigs into the fire box - not sure where that is in the British Rail Manual!

We successfully passed our annual Safety Inspection towards the end of April. Our inspector comes over from the UK and looks at all the operating lines on his visit, which gives him a bit of variety including steam, electric, Fell brake equipped and 7.5 inch gauge systems.

One major discussion point is how to translate Laxey into Manx Gaelic, our modern version is Laksey, but the older hands prefer Laxsaa, think many a cup of tea will be drunk over this. It is an interesting point in how languages develop. May you all have a good and safe season. *Colvyn Quaggin*

Whitfield Light Railway

A quick update on which has been a pretty non-stop busy time.

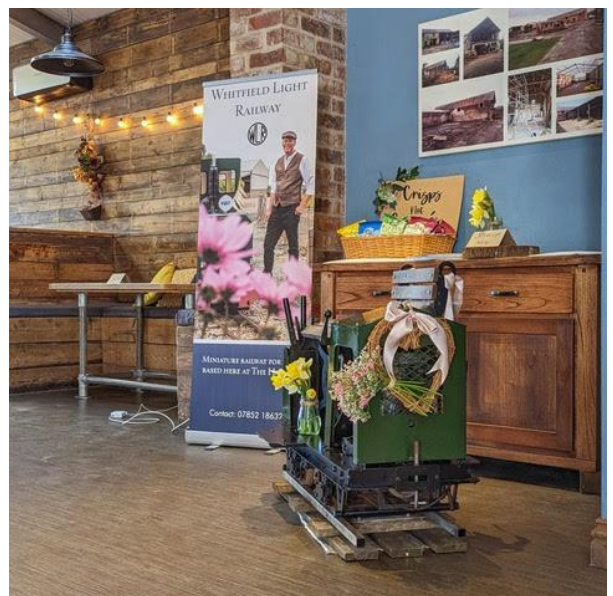
The railway reopened towards the end of the February half-term, after an epic rebuild of the field railway after Christmas. The aim is to have event track available for the Christmas railway in the future, without having to lift and relay the railway that wanders down the field.



The railway opened for weekends through March, with the addition of a wedding Fayre one Friday evening. Scamp no.31 'Otter' was duly tidied up and barrowed up the track to the Fayre in the cafe.

April saw Easter in 2 halves, with the first week being lovely weather and busy, and the second week the opposite. 'Griffon' had a weekend away at Rudyard for their diesel gala and performed faultlessly.

The indifferent Spring weather has continued through May but we managed to dodge the showers for the first wedding booking of the year. A groom and best men train before the



service, the bridal party with photographer after the service, and then the train was available to guests for the hour before the wedding breakfast. A great early evening.



In other news, we've started the process to replace the artic coaches. The wooden bodies are ex-High Legh and are due for replacement. The plan is a bit wider and with roofs. *Ian Whitfield*



Newsletter prepared and circulated by

Tony Davies, Short Acres, Tiptoe Road, Wootton, New Milton, Hants, BH25 5SJ

Tel No – 01425 616622.

e-mail – dublorunner@gmail.com

All photographs are the copyright of the Railway featured in the article, unless stated otherwise.

BRITAIN'S GREAT LITTLE RAILWAYS Ltd Registered Office: - Moors Valley Railway, Moors Valley Country Park, Horton Road, Ashley Heath, RINGWOOD, Dorset BH24 2ET Registered in England & Wales - Company No. 3143331